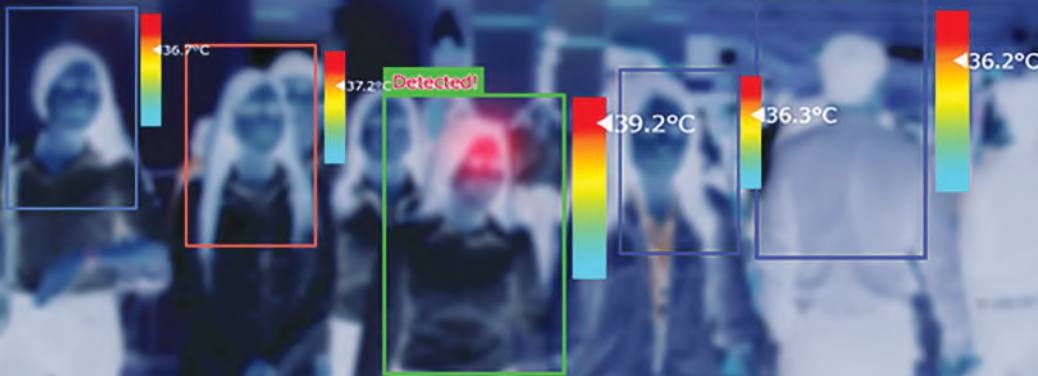


BODY TEMPERATURE CAMERA

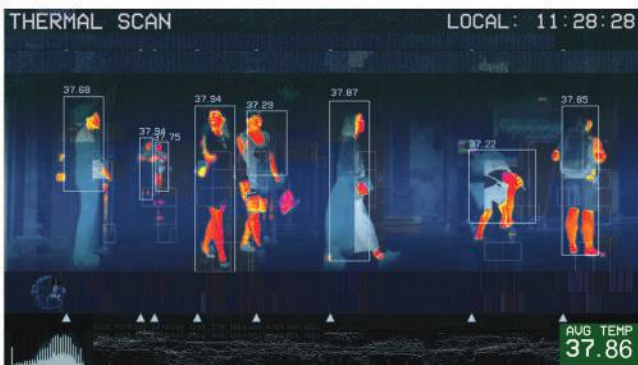


678-224-8220

www.beccatechnology.com



BTC-2-CAM Body Temperature Camera (BTC)



The **BTC** is a hands-free temperature monitoring system that quickly identifies individuals with elevated skin temperatures. This pre-screening tool automatically scans an individual entering a building, detects an abnormal temperature, sounds an alarm, and sends a facial snapshot to the system

operator. The system operator is then able to take corrective action to help prevent the spread of a communicable disease. Unlike handheld scanners, this system does not require person-to-person contact and can scan several individuals simultaneously, without significantly slowing inbound traffic.

Body temperature cameras are being used around the world to prevent the spread of illness. Fortune 500 companies including Tyson Foods, Amazon, Carnival Cruise Line and General Motors have recently deployed these systems as part of their pandemic response.

The BTC is effective and beneficial for all public facilities:

- ✓ Grocery Stores
- ✓ Airports and Other Transportation Hubs
- ✓ Government Buildings
- ✓ Jails and Prisons
- ✓ Banks
- ✓ Schools/College Campuses
- ✓ Manufacturing and Logistics Facilities
- ✓ Shopping Malls
- ✓ Office Buildings
- ✓ Places of Worship
- ✓ Senior Care Facilities

The BTC solution is the most complete and cost-effective system available. Companies using the system send a clear message to their communities that safety at their facilities is a top priority. As an employee at one facility stated, “This speaks volumes about how seriously [they] take our health. Having it in place when we come in each day provides some peace of mind.”

Similar sentiments have been expressed by patrons who need their confidence restored before returning to work, school or shopping.

Body temperature cameras are becoming essential pre-screening tools for the “new normal” that calls for social distancing and other measures to promote safer public interactions.



Package Includes: Camera, Calibration Device, Tripods, Laptop and Software

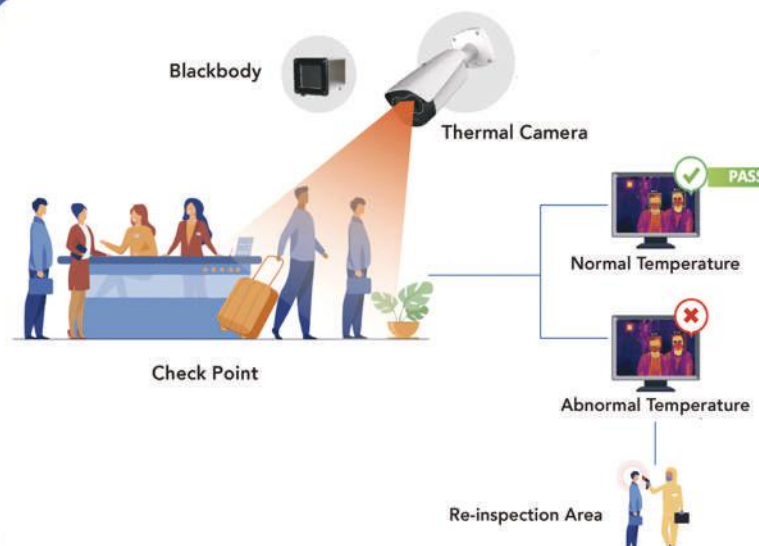


KEY FEATURES

- ▶ Temperature readings for multiple individuals at the same time
- ▶ Real-time alerts for readings outside of the normal temperature range
- ▶ Calibration device for consistent, reliable readings
- ▶ Face detection technology
- ▶ No contact required – supports social distancing
- ▶ Optional strobe light and speaker
- ▶ Quick set up and easy to use – fewer than 30 minutes to assemble and launch
- ▶ Promotes safer communities
- ▶ No information is stored, eliminating privacy concerns

Inventory is moving fast. In some markets that are having difficulty meeting demand, priority must be given to hospitals and medical facilities.

678-224-8220
www.beccatechnology.com



Product Features



High sensitivity thermal module with 256 x 192 resolution;
NETD is less than 60 Mk (@25° C, F#=1.0);
Supports contrast adjustment;
Leading thermal image processing technology: Adaptive AGC, DDE, 3D, DNR;
Up to 15 palettes of adjustable color;
Reliable temperature-anomaly alarm;
Temperature Range From -15°C to +150°C ;
Body Temperature Range From 35°C to + 50°C
High quality optical module with 2 MP resolution; Bi-spectrum image fusion, picture-in-picture preview; Support for capture and save in PC of personnel in and out

Specifications

Model – BTC-2-CAM

Thermal

Image Sensor	Vox Uncooled Focal Plane Arrays
Resolution	256x192
Pixel Interval	12pm
NETD	Less than 60 mK (@25°C.F#=1.1)
Aperture	F1.0
Field of View	35° x 27° (H x V)

Optical

Image Sensor	1/2.8" 2.0M Pixel CMOS
Resolution	1920x1080P
Min. Illumination	Color: 0.005Lux @ (F1.2, AGC ON), B/W 0.001 Lux @ (F1.2,
Field of View	8A4G°Cx 045N°)(H x V)
Focal Length	4mm
Shutter Speed	1s to 1/100,000s
White Balance	Auto/Manual/ATW (Auto-tracking White Balance)/ Indoor/Outdoor/Daylight Lamp/Sodium Lamp
Day& Night	ModeIR cut filter with auto switch
WDR	80 dB

Features

Bi-spectrum Image Fusion	Fusion view of thermal view and overlaid details of the optical
Picture in Picture	Combines details of thermal and optical image PIP, overlay thermal image on optical image

Smart Functions

Face snapping	Built-in deep learning AI algorithm, Supports simultaneous detection of 20-30 faces
Temperature Measurement	Support global and local temperature
Temperature Range	From -15°C to +150°C
Body Temperature Range	From 35°C to + 50°C
Temperature Accuracy	Target temperature 35°C A 38°C ±0.3 °C Target temperature 20°C A 33°C ±0.6 °C Target temperature 38°C A 50°C ±0.6 °C

Network

Main Stream	Thermal: 25fps(1920 x 1080, 1280 x 720)
Sub Stream	Thermal: 25fps(704 x 576, 352 x 288)
Video Compression	H.264 (Baseline/Main/High Profile) /MJPEG/H.265
Audio Compression	G 711u/G711a/G.7221/MP2L2/G.726/PCM
Protocols	TCP/IP, ONVIF, GB/T 28181, DHCP, RTP, RTSP, PPPoE
API	OUPNnVPI,FU(DPrPofile S, Profile G, Profile T), SDK

General

Web Client Language	Languages English, Chinese
Power	DC 12V, 0.65A
Work Temperature/ Humidity	From -20°C to 55°C; Humidity: 95% or Less
Protection Level	IP66
Dimension	246 mm x 101 mm x 81 mm (with bracket)
Weight	Approx. 1.0 kg